

BRAT IMPLANTS

Research through innovation.

www.brat-implants.com





BRAT

Research through innovation

Research Through Innovation

THE BEST FRENCH IMPLANT SYSTEM



Company profile

INTRODUCTION

The **BRAT company** was established to carry out research, development and trials on products in order to improve implant and pre-implant procedures (autogenous, allogenic and allographic bone grafts). Our team is made up of practitioners experienced in implantology who have been practicing, as well as teaching in hospital-universities, for more than 25 years. Our expertise, in both clinical practice and academics, is the cornerstone for our bringing innovation and know-how to the field of dental implants.

BRAT developed the "**Implant Express**", a true global implant solution. The solution is designed to allow placing the implant on a previously toothless ridge, even immediately after. Other products currently being developed will gradually be introduced when they are ready out.



Content

COMPANY PROFILE	p3
IMPLANT EXPRESS	p4
PROSTHETIC COMPONENTS	p6
CEMENT RETAINED PROSTHESIS	p8
SCREW RETAINED PROSTHESIS	p11
REMOVABLE PROSTHESIS	p13
BRAT PRODUCTION	p15
BRAT & ACADEMICS	p17
CLINICAL CASES	p19
SURGEONS WORLDWIDE TESTIMONIALS	p22

IMPLANT EXPRESS

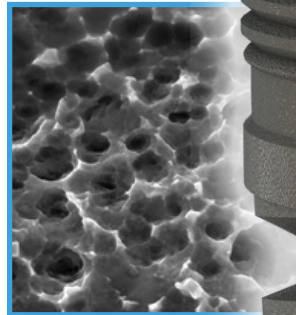
Presentation of the Implant Express

Material

The Implant Express is made from Grade V titanium alloy Ti 6Al 4V ELI, extremely durable, robust and highly biocompatible material.

Osteotec® Surface treatment

The Implant Express surface treatment is fully biocompatible and osseo conductive. Our sandblasting (μ blasting) surface treatment, which has proven to achieve the desired roughness levels for optimal osseointegration, attains the highest implant surface purity levels and increases the success rate of Bone to Implant Contact (BIC).



Shape and design of the "Implant Express":

- ➔ Rapid insertion into the implant bed
- ➔ Excellent primary stability
- ➔ Bone condensation which improves bone structure (Type D 3 to Type D 2).

Physical characteristics of the "Implant Express"

- ➔ The rough surface of the implant is entirely threaded.
- ➔ Micro-thread at the base of the implant prevents bone loss.
- ➔ The thread of the "Implant Express" is fine and deep, which allows important primary stability when digging into spongy bone.
- ➔ Connecting to the implant: the connection area of the "Implant Express" is a 2.5mm internal hexa connection, where the prosthetic abutment and implant lock perfectly.

Usable in all clinical cases




- ➔ The Implant Express guarantees safe surgical procedures which are often simplified
- ➔ Immediate implant placement, post extraction
- ➔ Implant placement possible in jaws with soft bone quality (type 4)
- ➔ Maxillary and mandibular implant with little bone depth or in sinus floor
- ➔ Immediate loading is possible (excellent primary stability)



Implant Express COLOR CODE

Length & Diameter of the implant

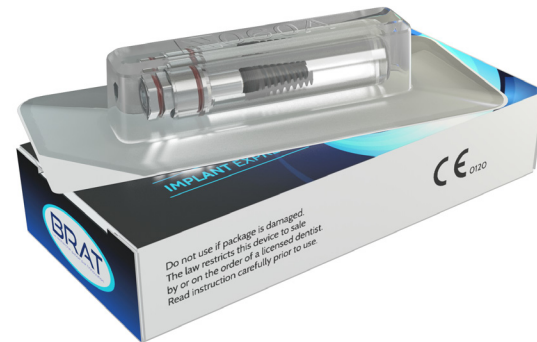
*cf picture p4

Diam.	L 8 mm	L 10 mm	L 11,5 mm	L 13 mm	Size A	Size B
 Ø 3.75 slim	E3308	E3310	E3311	E3313	3,8 mm	3,3 mm
 Ø 3.75	E3708	E3710	E3711	E3713	3,8 mm	3,6 mm
 Ø 4.2	E4208	E4210	E4211	E4213	4,2 mm	3,91 mm
 Ø 5	E0508	E0510	E0511	E0513	5 mm	4,61 mm

ULTRA SAFE PACKAGING

Implant Express is delivered in a safe packaging. The implant is protected by a double sterile barrier, the first one is a inner tube which holds the implant thanks to its silicon joint, the whole is thermo sealed in a blister.

All the informations about the tracability are available from the initial packaging to the blister.

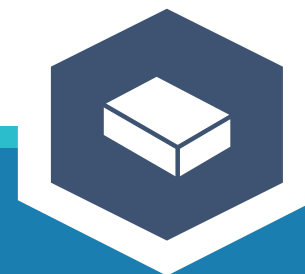


Our products are made in France



HIGH QUALITY PRODUCTS

BRAT products are CE certified and the Company is certified ISO 13485. BRAT makes a continuous quality control. Strict guidelines apply to the production of the implants, during all the steps of production. Every implant is sterilized, treated with gamma rays and packaged individually inside a sterile tube in a sealed blister.



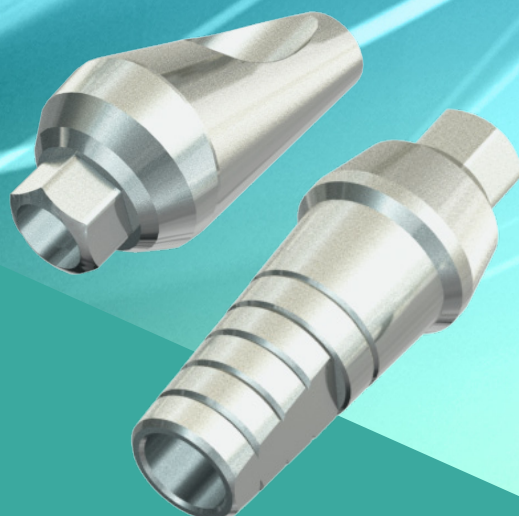
PACKAGING & SECURITY

Then the tube is packaged inside a sealed blister pack. Packaging was studied specifically to avoid risk of contamination during shipping and handling. The aim is to maintain our quality policy and the interest of our users and patients. We continually invest in innovation and improve our products.



www.brat-implants.com

Prosthetic components



ADVANTAGES OF BRAT PROSTHETIC SYSTEM

- The Implant Express prosthetic system is complete and easy to use.
- The largest choice of prosthetics components.
- All prosthetics components are compatible with the "Implant Express" regardless of length or diameter of the implant.
- Platform switching is possible.
- Error-proof



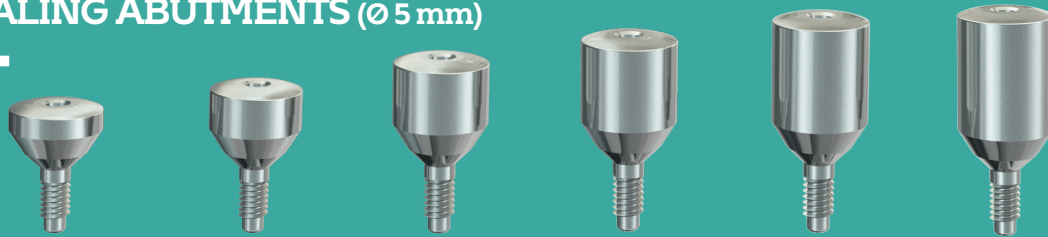
PROSTHETIC COMPONENTS

STANDARD HEALING ABUTMENTS (∅ 3.75 mm - 4.2 mm)



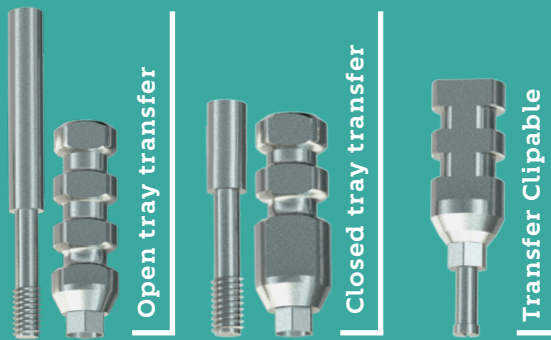
Ref.	V0001	V0002	V0003	V0004	V0005	V0006
Height	2 mm	3 mm	4 mm	5 mm	6 mm	7 mm

LARGE HEALING ABUTMENTS (∅ 5 mm)

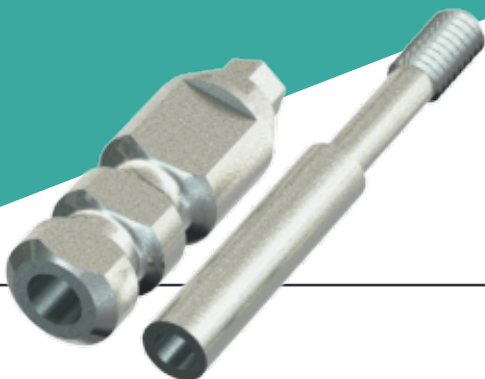


Ref.	V0011	V0012	V0013	V0014	V0015	V0016
Height	2 mm	3 mm	4 mm	5 mm	6 mm	7 mm

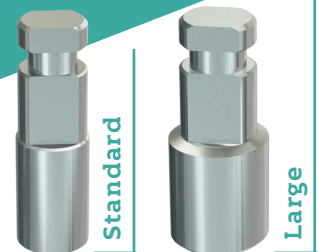
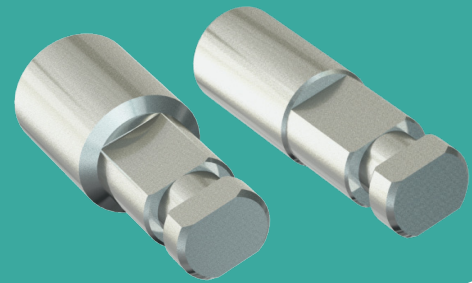
IMPRESSION COPINGS



Ref.	T0003	T0004	T0005
Height	13 mm	11,4 mm	10,75 mm



LABORATORY ANALOGS



Ref.	A0001	A0002
Height	12,3 mm	12,5 mm
Diam.	3.75 mm	5 mm

Screw included
with all abutments

V0000



Cement retained Prosthesis

Straight abutments

BRAT proposes a large
range of straight abutments,
standard, shoulder, narrow
or anatomic abutments



Angulated abutments

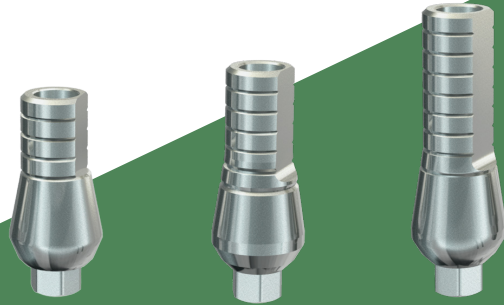
BRAT proposes 2 angulations :
15° and 25° . Depending on the
prosthetic case, we propose
regular or esthetic abutments
with different heights.



CEMENT RETAINED PROSTHESIS

STRAIGHT ABUTMENTS

STANDARD ABUTMENTS



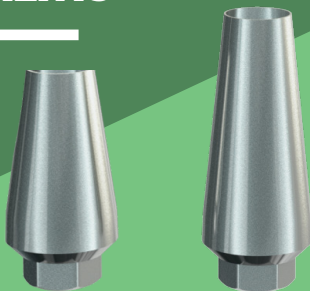
Ref.	P0001	P0002	P0003
Height	7,4 mm	9,1 mm	11,5 mm

SHOULDER ABUTMENTS



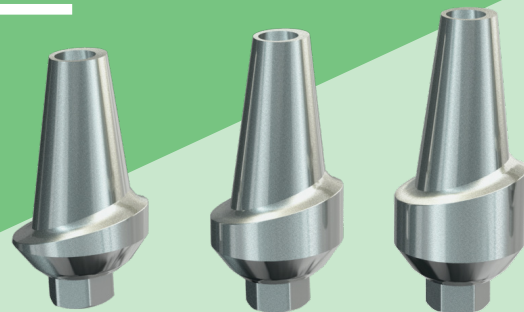
Ref.	P0005	P0006	P0007	P0008
Shoulder	1 mm	2 mm	3 mm	4 mm
Height	8,5 mm	9,5 mm	10,5 mm	11,5 mm

NARROW ABUTMENTS



Ref.	P0014	P0015
Height	5 mm	8 mm

ANATOMIC ABUTMENTS



Ref.	P0016	P0017	P0018
Height	9 mm	10 mm	11 mm

CEMENT RETAINED PROSTHESIS

ANGULATED ABUTMENTS

ANGULATED 15° ABUTMENTS



Ref.	P0020	P0021
Height	9 mm	12 mm

ANGULATED 25° ABUTMENT



Ref.	P0030
Height	9 mm

ANATOMIC 15° ABUTMENTS



Ref.	P0022	P0023	P0024	P0025
Shoulder	1 mm	2 mm	3 mm	4 mm
Height	9,5 mm	10,5 mm	11,5 mm	12,5 mm

ANATOMIC 25° ABUTMENTS



Ref.	P0026	P0027	P0028
Shoulder	1 mm	2 mm	3 mm
Height	9,5 mm	10,5 mm	11,5 mm



Screwed retained prosthesis



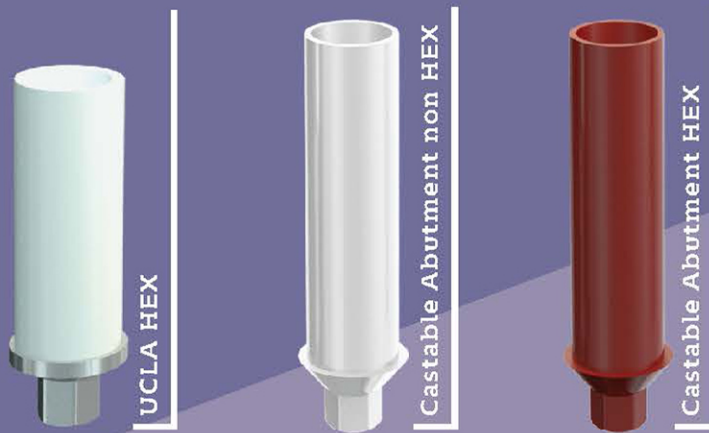
Castable abutments

Castable abutments made of machined residue-free POM. They provide high retention for waxes and resins, facilitate the waxing and ensure precise and stable connection



SCREWED RETAINED PROSTHESIS

CASTABLE
ABUTMENTS



Screw included
with all abutments

V0000

Ref.	P0039	P0040	P0041
------	-------	-------	-------



Removable Prosthesis

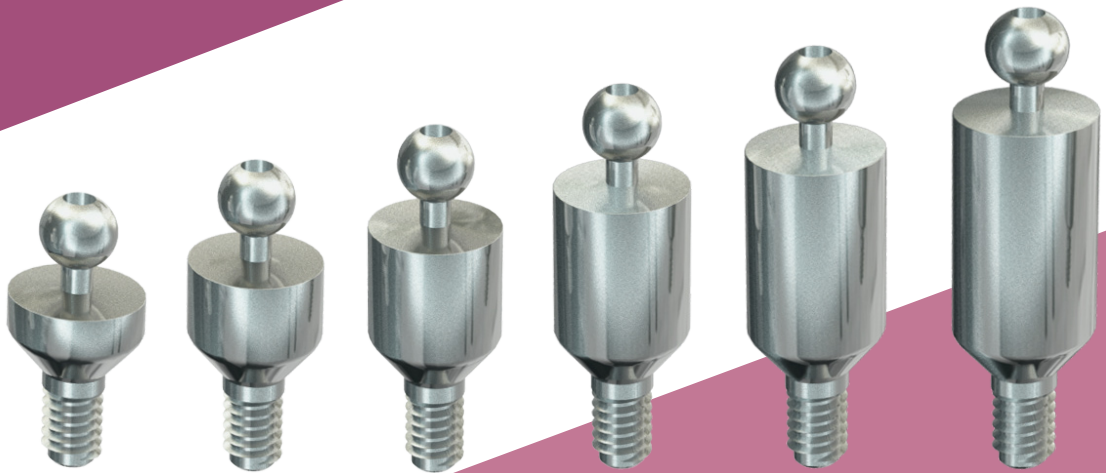
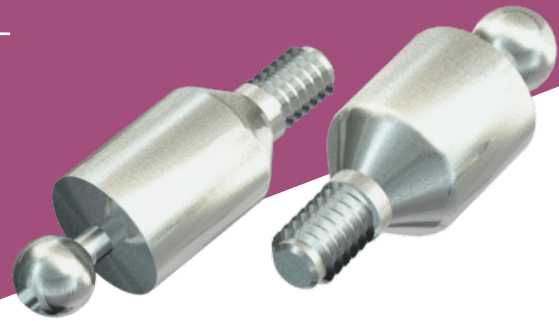
Ball Attachments

Ball attachment is connected by a click to the removable denture. The abutment is available in different heights selected according to the height of gums. Ball attachment is designed with a titanium cap and silicon intermediate cap. It is designed for accurate joining of over-denture implants.



REMOVABLE PROSTHESIS

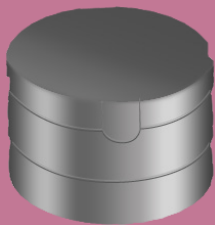
BALL ATTACHMENTS



Ref.	P0033	P0034	P0035	P0036	P0037	P0038
Height	1 mm	2 mm	3 mm	4 mm	5 mm	6 mm

CAPS

METAL CAP FOR BALL ATTACHMENT



SILICON INTERNAL CAP



Ref.	P0031	P0032
------	-------	-------

BRAT PRODUCTION

Research through
innovation

Engineering

Implant milling

First cleaning

First quality control

Sand blasting surface
treatment Osteotec®

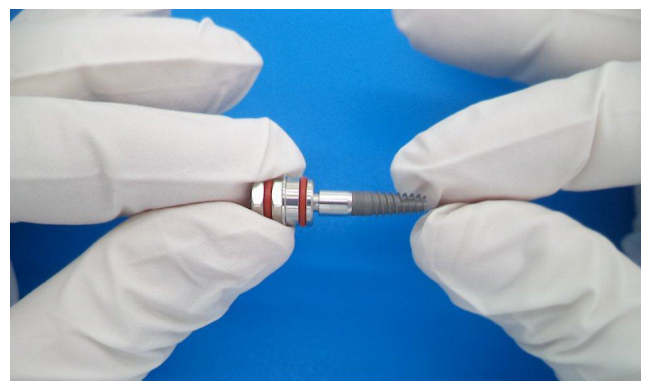
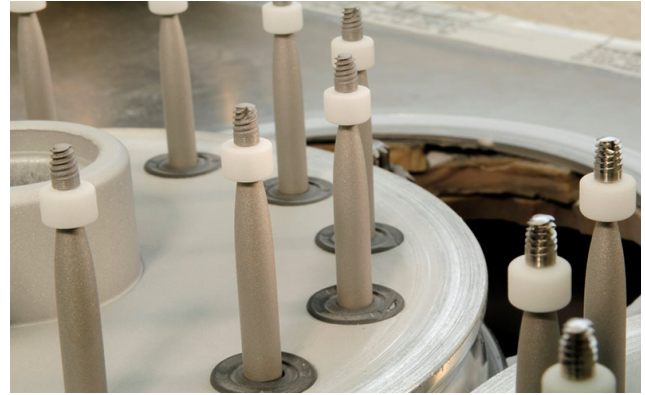
Implant cleaning with
ultrasound equipment

Packaging and labeling
in clean room

Sterilization with
gamma radiation

Tests and analyses on
dental implants

Products entering
market





BRAT IMPLANTS

Research through innovation.

BRAT & ACADEMICS

BRAT IMPLANTS organizes complete training courses in implantology, from simple to advanced surgeries.

It takes place beforehand university education and proposes a global vision of implantology to validate requirements for any advance and for university procedure. This education, which is supervised by experimented clinician, broaches surgical, prosthetic, periodontal and occlusal aspects of edentulism (total or partial) treatment.



Training objectives :

- ➔ To develop knowledge of oral rehabilitation techniques
- ➔ To propose solutions for every kind of edentulism problem
- ➔ To breath new life to daily practice
- ➔ To establish and maintain patient relationship

The training has the particularity to work for practitioner's independence by putting surgical and prosthetic phases of implantology treatment into practice. Implant treatment's essential themes are broached within a participants' small group. So, the training manager is quite capable to answer the questions and the doubts of each one. The practical

training is also primordial to secure first surgeries. Courses options are adaptable in accordance with your situation. Every course have an implantology's theoretical approach then an implantology's practical approach. This allows everyone to acquire a real clinical experience. The schedule is assessed according the students needs.

BRAT "EXPERTS" are also available to advise practioners and to discuss complex cases or complications before and after surgeries.



BRAT

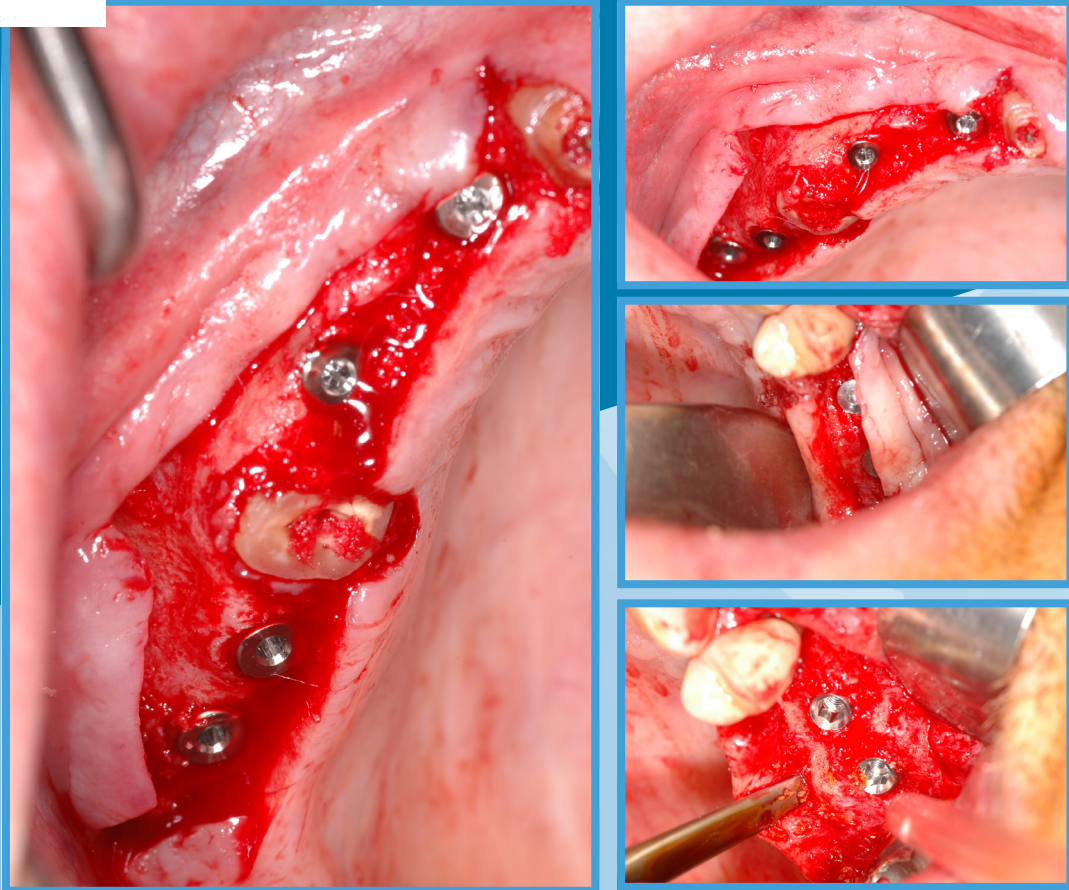
Research through innovation

**Get train by our team
of expert surgeons !**

BRAT IMPLANTS CLINICAL CASES

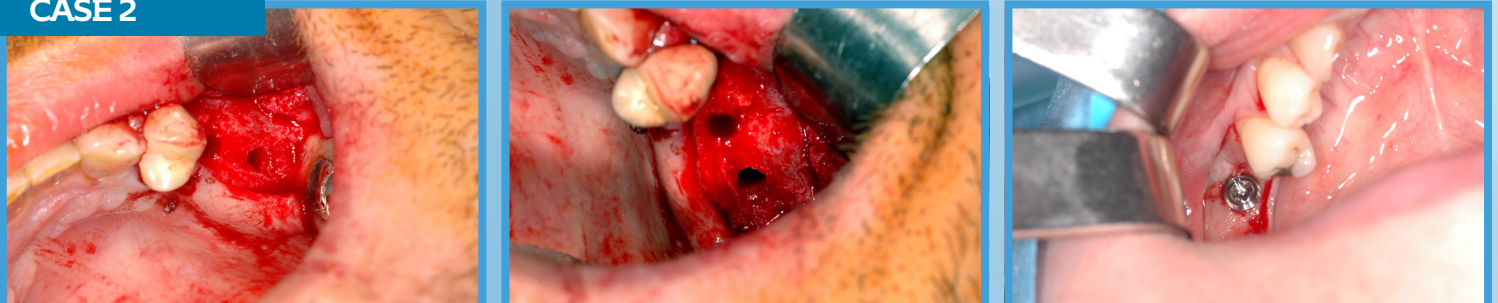
IMPLANTS CASES

CASE 1



Multiple upper maxillary implant Crestal Incision

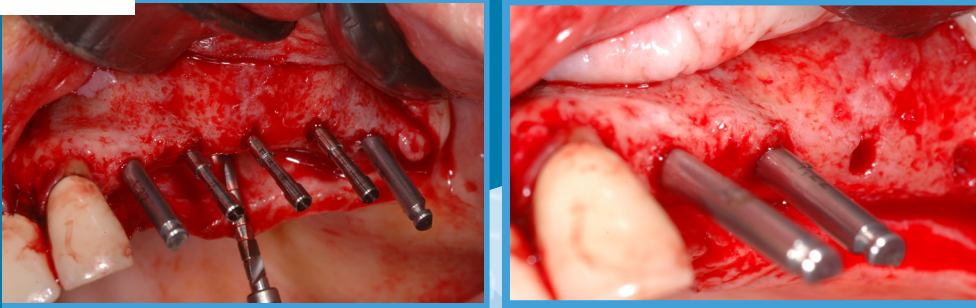
CASE 2



Implant bed drilling in an upper posterior maxillary bone after a sinus elevation

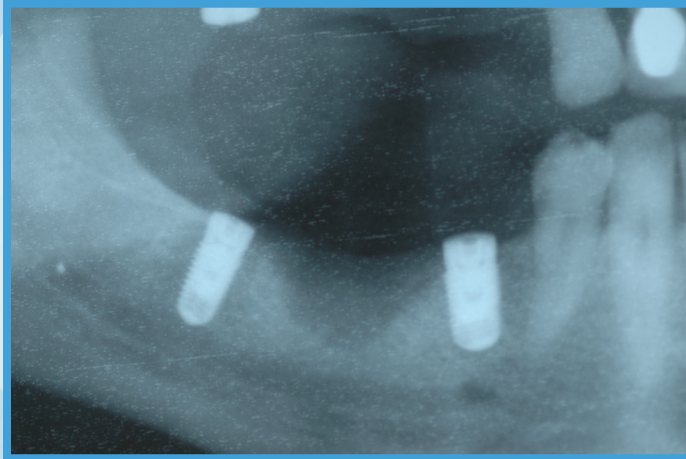
Implant bed drilling in an upper posterior maxillary bone after a sinus elevation Implant Express placement

CASE 3



Multiple drilling upper maxillary
Note the parallelism of the implants (parallel pins)

CASE 4



Placement of two Implants Express on either side of a tooth extraction. we notice the loss of bone extraction.

IMMEDIATE LOADING CASES

CASE 1



Immediate loading after extraction of left incisor teeth (teeth n°22) despite the cortical bone loss, placement of the implant. Good primary stability / need a Guided Bone Regeneration

BRAT IMPLANTS CLINICAL CASES

IMMEDIATE LOADING CASES

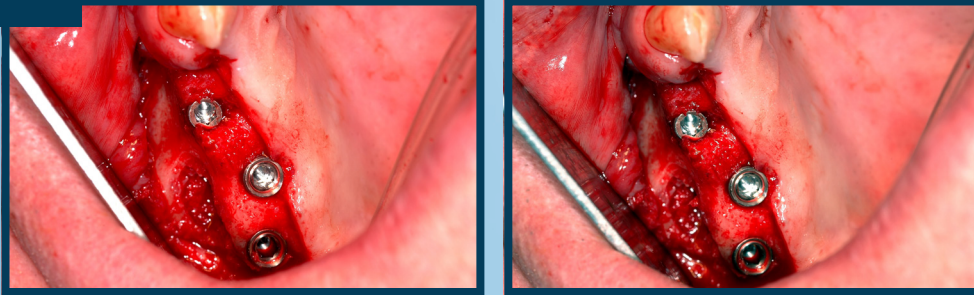
CASE 2



Guided bone regeneration on teeth number 22 for labial surface of the implant

SINUS LOADING CASES

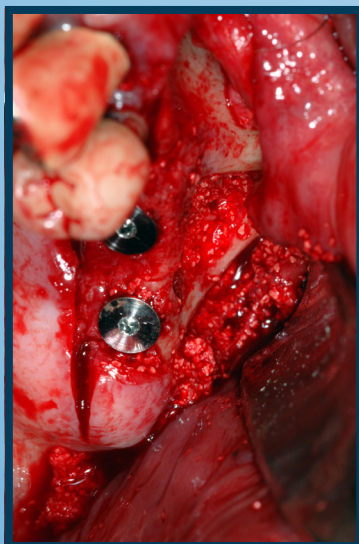
CASE 1



Implants placement

Upper posterior maxillary area with simultaneous sinus floor

CASE 2



Implants placement

Upper posterior maxillary area with simultaneous sinus floor



SURGEONS WORLDWIDE TESTIMONIALS :

DR MORISON (USA)

“ *The Implant Express answers all current clinical demands.* ”

DR PEREZ (MEXICO)

“ *The Implant Express optimizes all implant requirements.* ”

DR NGUYEN (FRANCE)

“ *BRAT implant solution and its trephine drill are a great breakthrough in the field of implantology.* ”

DR WILSON (UK)

“ *BRAT surgical Kit is very easy and complete / they offer two different drilling systems with a great innovation > a bone recover drill* ”

DR GIMENEZ (SPAIN)

“ *Implant Express placement is easy. This implant system can be used by surgeons of all levels* ”

Research through innovation.

 www.brat-implants.com



CONTACT US



Head Office : 38 rue des Mathurins, 75008 Paris - France



+33 (0) 6.28.25.23.99



contact@brat-implants.com